

SOLAR MOTION SENSOR LIGHT USER MANUAL MANUÁL



- | | |
|--------------------|-----------------|
| ① Solárny panel | Solar panels |
| ② LED svetlo | LED lamp |
| ③ Pohybový senzor | Motion sensor |
| ④ Funkčný prepínač | Function switch |

Špecifikácia

Solárny panel: 6V, 2,5W, 18% konverzia
Batéria: Lítiová batéria 3,7V, 2000mAh
Výstupný výkon: 3,2V, 3,8W
LED: 60 mA/28LM/SMD2835*36
Svetelný tok: 450 lm
Svetelný uhol: 120°

Funkčný prepínač

1. Pre zapnutie podržať 3 sekundy
2. Prvý mód: detekcia pohybu + tlmené svetlo
Pri detekcii pohybu svieti intenzívne svetlo. Ak nedetekuje pohyb prepne do tlmeného svetla.
3. Po stlačení prepínača druhý mód: detekcia + vypnuté
Pri detekcii pohybu svieti intenzívne svetlo. Ak nedetekuje pohyb svetlo nesvieti.
4. Po stlačení prepínača tretí mód: stále svetlo strednej intenzity
5. Po stlačení prepínača sa svetlo vypne

Nabíjanie 6 hodín pri slnečnom svite
Vodotesné: IP65

-----1-----

Specifications

Model: 1501
Solar panel power: 6V 2.5W ,18% conversion of power
Storage battery: Lithium battery 3.7V 2000mAh
Output power: 3.2V 3.8W
LED: 60mA / 28LM / SMD2835*36PCS
Luminous flux: 450lm
Angle of induction: 120
Distance of induction: Within 5-10M angle of induction

Functional switch:

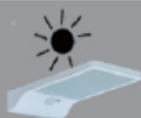
- 1.Press 3 seconds to open
- 2.First pattern: Body induction + dim light pattern
(While people go through sensing area,the brightness will be strong.The light turns to dim after the people leave the area).
- 3.Press again, change to body induction mode
(While people go through sensing area,the brightness will be strong.The light turns off after the people leave the induction area).
- 4.Press the switch again: The solar lamp will turn on all the time
(The light will turn on automatically at night, and it will be shut down automatically after 5 hours)
- 5.Press again, then turn off.

Induction lighting time : Extended for 10 seconds after inducted,If the light induction mode delay time isn't finished that induction once again, the timing will be to start again.Function Light control:When the solar board meet with shine the electric circuit will stop work, the key will ineffective ;It will automatically start up and circuit will work at light.

Induction function of the work current: 3.8V 1400mA
Dim light pattern of the work current: 3.8V 30mA
The solar lamp will turn on all the time of the work current:
3.8V 400mA
Charging time : 6 hours after the sunlight
Waterproof level: IP65

-----2-----

Working Principle



1. Charge the solar panel by placing it under direct sunlight at daytime. The electrical energy is stored in the storage battery. More direct sunlight, charge more electrical energy.

1. Batéria solárneho svetla sa nabije umiestnením na slnečné svetlo



2. It will automatically startup circuit work at night.
2. V noci sa automaticky zapne



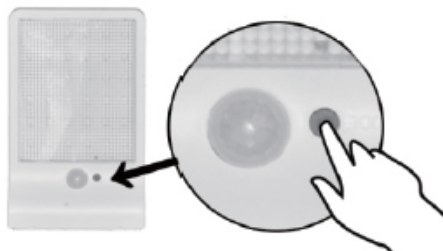
3. Human body induction function, when people go through the sensing area, the light will be strong.
3. Pohybom sa svetlo zosilní



4. It will be on standby when people leave the induction area for about 10seconds. It will automatically shutdown the circuit and charge during the daytime.
4. Ak nedetekuje pohyb stlmí sa alebo vypne po 10 sekundách

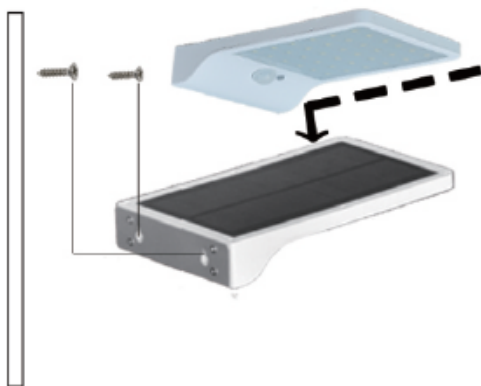
-----3-----

Assembly Instructions Montáž



When the solar board meet with shine the electric circuit will stop work, the key will ineffective ;it will automatically start up and circuit will work at light.

Funkčné tlačidlo MODE použite za tmy



-----4-----

Pred prvým použitím nabíjajte pod slnečným svetlom
Ak svetlo bliká nabíjajte batériu
Ak sa svetlo dlho nepoživalo nabíjajte batériu pred použitím
Nabíjajte svetlo aspoň raz za mesiac
Doba svietenia závisí od nabitia batérie

Cautions:

1. For the first time use, please put the product under the direct sunlight charging for several hours before using.
2. When the product isn't in use for a long time, please take out the battery and recharge for the battery every three months at a time, It's ensure that the battery doesn't damaged or leakage during such a long time. Or charge the lamps once a month.
3. If the lights is flashing, on behalf of the battery is exhausted, please recharge before normal use.
4. In fact, durations of light for solar panels charge depends on the sunlight exposure illumination time and weather conditions, the faster the stronger for sunshine; on the contrary, the effect will be decreased in the raining day, and the illumination time is shorter.

-----5-----